

# SPIDER COUPLINGS



Elastic couplings reduce intermittent short period torsional shocks, by briefly storing elastically part of this shock energy. Any degree of uneven movement and load transference is consequently reduced. Elastic couplings restrain body resonance, and therefore contribute to noise reduction. The elastic Spider coupling transmits the torque safe against break-down.

## Spider

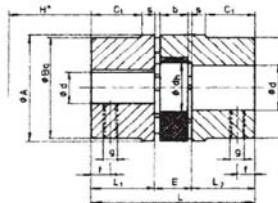
Material: Polyurethane  
 Hardness: 92° Shore (A)  
 Colour: White  
 Temperature range: -40°F to +194°F  
 Short term temperature peaks: -58°F to +248°F  
 Damping: Good  
 Elasticity: Medium  
 Abrasion resistance: Very good  
 Durability: Very good  
 Typical application: Normal drives



Part No. (Spider only)	Torque (Nm)			Max. rotation n (RPM) up to V=		Torsional angle		Torsional stiffness C <sub>D/N</sub> (Nm/rad)				Relative damping
	contin. T <sub>KN</sub>	max. T <sub>K</sub>	alt. T <sub>KW</sub>	30 m/s	40 m/s	T <sub>KN</sub> φKN	T <sub>Kmax</sub> φKmax	1.00 T <sub>KN</sub>	0.75 T <sub>KN</sub>	0.5 T <sub>KN</sub>	0.25 T <sub>KN</sub>	
SP15	7.5	15	2.0	19000	----	6.4°	10°	----	----	----	----	0.75
SP19/24	10	20	2.6	14000	19000	3.2°	5°	0.66x10 <sup>3</sup>	0.55x10 <sup>3</sup>	0.44x10 <sup>3</sup>	0.25x10 <sup>3</sup>	
SP24/32	35	70	9	10600	14000			2.00x10 <sup>3</sup>	1.80x10 <sup>3</sup>	1.40x10 <sup>3</sup>	0.90x10 <sup>3</sup>	
SP28/38	95	190	25	8500	11800			5.20x10 <sup>3</sup>	4.25x10 <sup>3</sup>	3.10x10 <sup>3</sup>	2.10x10 <sup>3</sup>	
SP38/45	190	380	49	7100	9500			10.00x10 <sup>3</sup>	8.20x10 <sup>3</sup>	6.10x10 <sup>3</sup>	4.00x10 <sup>3</sup>	
SP42/55	265	530	69	6000	8000			18.90x10 <sup>3</sup>	14.11x10 <sup>3</sup>	10.60x10 <sup>3</sup>	6.90x10 <sup>3</sup>	
SP48/60	310	620	61	5600	7100			20.00x10 <sup>3</sup>	16.40x10 <sup>3</sup>	12.60x10 <sup>3</sup>	8.00x10 <sup>3</sup>	

Spiders also available on request in colors: red, green, blue, yellow

Spider Coupling  
 (2 hubs plus spider)  
 Material: Die-cast aluminum



Part No.	Bores		Dimensions													Weight approx. lbs.
	Pre bored H7	min.	max.	A	Ba	L	L1+L2	E	s	b	C1	dh	g not standard	f	H*	
A15	undrilled	4	15	26	26	28	10	8	1	6	-	12	M5	5	8	0.06
A19/24	undrilled	19	24	40	39	66	25	16	2	12	21	18	M5	10	14	0.29
A24/32	undrilled	16	32	55	53	78	30	18	2	14	26	27	M5	10	16	0.57
A28/38	undrilled	28	38	65	63	90	35	20	2.5	15	29	30	M6	15	18	1.01
A38/45	undrilled	38	45	80	79	114	45	24	3	18	39	38	M8	15	19	1.98
A42/55	undrilled	42	55	95	94	126	50	26	3	20	41	46	M8	20	21	3.06
A48/60	undrilled	48	60	105	104	140	56	28	3.5	21	46	51	M8	20	22	4.10

H\* is the minimum dimension required for the disassembly of the aggregates in the radial direction.  
 Spider couplings also available in: Cast Iron - SG Iron - Steel - Please request further details.

All dimensions are subject to change without notice.